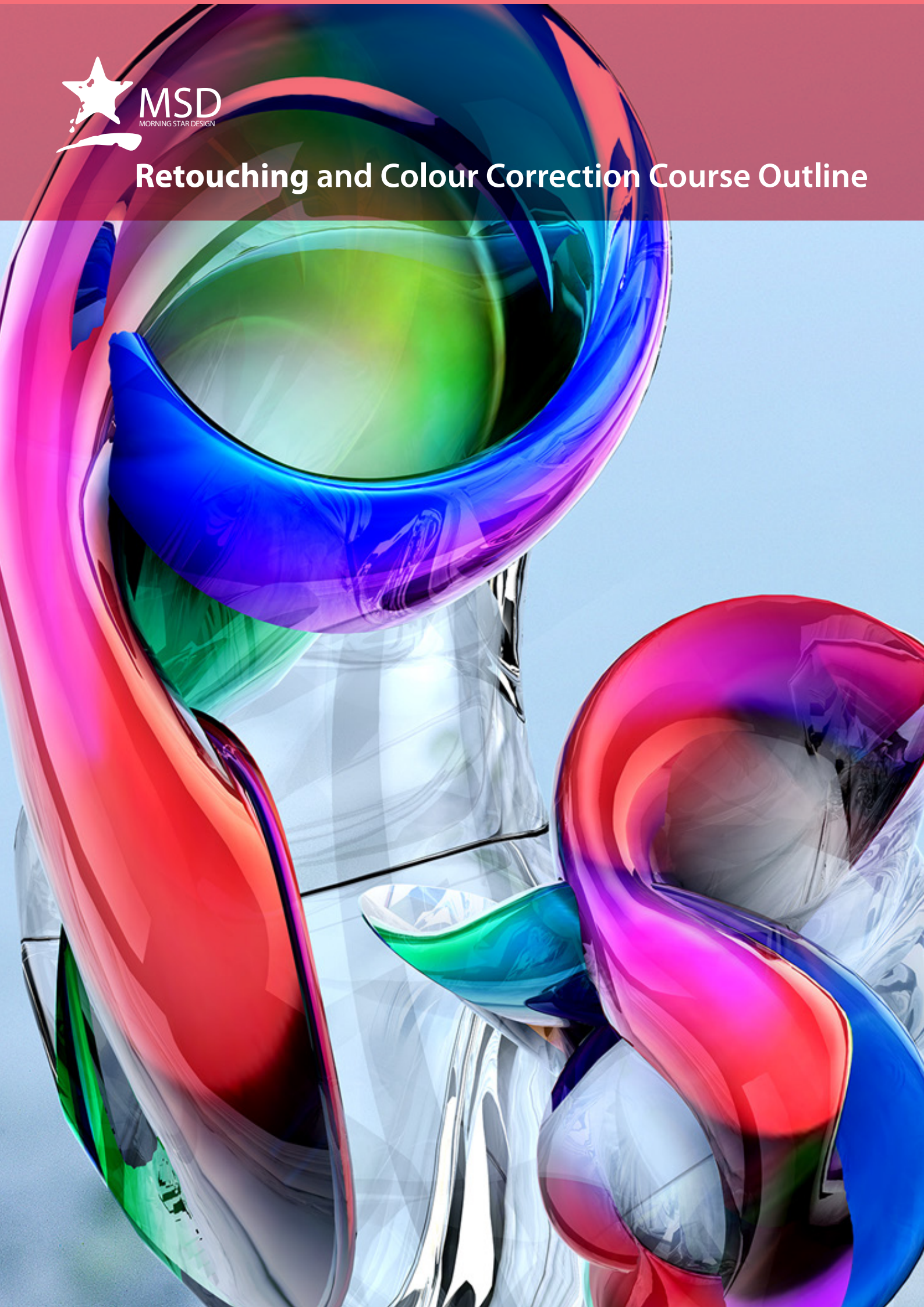




# Retouching and Colour Correction Course Outline





Duration: 2 Days

Related Courses:  
Photoshop, After Effects,  
CorelDRAW, Paintshop Pro,

#### Course Overview and Objectives

Enhance your colour work in Photoshop. Explore advanced colour correction techniques including highlights and shadows, tonal neutrality, contrast, and superior sharpening techniques. Work through technical and artistic methodologies for boosting the colour parameters and correcting images for your output conditions – be it print or digital. Work with colour and image detail at a more advanced level. Skin softening, enhancing eyes and complicated masking techniques, blemish removal and body sculpting amongst many other techniques.

Pre-requisites:  
Prior Photoshop knowledge is beneficial.

## Retouching and Colour Correction Course Outline

### Your colour environment

- The Ishihara test
- The Farnsworth-Munsell Model
- Exploring gamuts
- The key differences between LAB, RGB, CMYK, Broadcast
- Assessing ambient lighting conditions

### Colour management

- Monitor choices and calibration
- Working with spectrophotometers
- Manual calibration
- Setting up colour for your press conditions
- Ideal viewing conditions
- Optimizing your Photoshop settings
- The power of polychromatic grey
- Deploying colour settings across your workflow
- See colour consistently across all of your tools

### Colour Fundamentals

- Individual Colour Perception
- Colour Myths and Misconceptions
- Colour Models and why you need to understand them
- Colour Printing vs colour for devices
- Colour Gamuts
- The Colour Correction Regimen

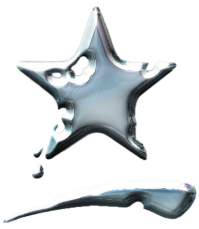
### Retouching

- The professional retoucher's checklist
- Size matters
- Drawing tablets vs working with a mouse
- Shortcuts in your workflow
- Assessing a retouch
- Stroke direction
- Working at the correct Zoom levels
- Catching problem areas
- Retouching men and women
- Creating actions

### Portrait and people retouching

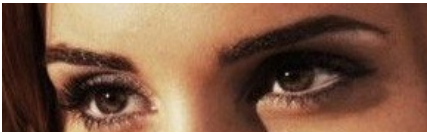
- Retouching eyes
- Getting skin right
- Reshaping facial features
- Healthy hair
- Lips and mouth areas
- Digital dieting – slimming a model
- Hiding pores and Hollywood skin





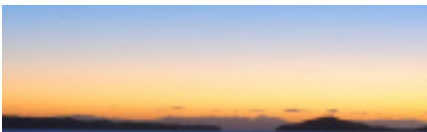
tel +27 11 782 4297  
fax +27 86 511 3343  
109 3rd street, linden, 2195  
po box 44007, linden, 2104  
South africa

e-mail: [msd@imsd.co.za](mailto:msd@imsd.co.za)  
website: [www.imsd.co.za](http://www.imsd.co.za)



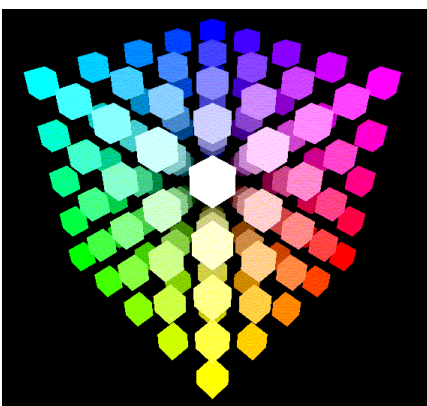
### Glamour retouching

A guide that will help you through the process of doing a highly stylized professional retouch, with a focus on achieving that glamour-style look. Determine what to look for when you select your image, fixing an image's flaws to create a glossy appearance.



### Breathtaking vistas

This course will equip you with the tools to adjust landscape photos and bring out the best in them. From the detail of background regions to the horizon. Extract the most out of your digital camera including the colors in the foreground and learn how to emphasize the whole scene



### Advanced techniques

- Colour theory
- Additive and subtractive colour models
- Device independent colour
- Colour for web and devices
- Colour for print, web and broadcast workflows
- Exploring LAB
- Finding colour where none exists
- Constructive destruction
- Colour by numbers
- The greens of nature
- Artificial tanning
- Working with RAW

### Neutral Tones

- Why Gray Balance Matters
- Assessing a Colour Cast
- Establishing Gray Balance
- RGB Neutral Corrections
- CMYK Neutral Corrections
- Compensating for Lighting

### Quick fix tips and techniques

- Working with bridge
- Tweaking your preferences
- Remapping tonal values
- Auto colour correction options
- Corrections with levels
- Correcting midtones with levels
- Curves
- Channels
- Adjustment layers
- Smart corrections
- Replace colour
- Selective colour
- Colour imaging workflows
- Image capture and processing